



SUPERPOWER PUMP

SPLIT-CASING CENTRIFUGAL PUMP

SPS SERIES: 1450 RPM

Pumps Catalogue



40th
Anniversary

Superpower Pumping Engineering, established in 1977, engages mainly in water pumping design, manufacturing, installation and maintenance businesses. Having existed in the industry for over 30 years, Superpower is known to be the first company in Hong Kong that connected water pump designing, manufacturing, production, installation, maintenance and 24 hours emergency services.

Aiming to pursue high quality products and services to its valuable customers, and with the support from its parent company, Superpower invests substantial resources in product design, research and enhancement, human resources and business development. Such move will help satisfying customers' needs and ensuring the operation of water supply runs smoothly and will not be affected by external interruption.

Its continued dedication to the industry has enabled Superpower to earn accolades from the trade. In 2001, the award of ISO 9001:2000 certification by SGS, United Kingdom further proved its commitment leads to winning international acclaims and building a solid reputation.

Water pumps is the core product of the Company's manufacturing arm. Today, Superpower's different materials and functional pumps produced for the residential and commercial buildings are ranked as the most popular items in the market. The name of Superpower represents quality water pump and ranks the best selling items in the market.

Today, Superpower employs more than 60 staff overseeing water supply system for over 1000 properties in Hong Kong to provide better after sale services, including luxurious residences, large-scale residential estates, shopping malls, offices, hotels, schools, as well as property management companies. Superpower Pumps installed in Hong Kong including the Benchmark properties such as International Commerce Centre, The Leighton Hill, Manhattan Hill, Dynasty Heights and Grand Promenade.

Apart from the above prestigious buildings, Superpower also serves for some of the prominent property developer as its customers, such as Sun Hung Kai Properties, Henderson Land Development and Sino Land etc.



International Commerce Centre



INTRODUCTION

SPS horizontal double-suction split-casing pump is advanced new product. Pump casing is in linearity design with stiffeners. The two bearings are located at a short distance, and the shaft is accordingly shortened, so that shaft, bearings and mechanical seals would be kept in a long service life. Shaft is fully sealed away from medium, no erosion, and high interchangeability. Closed circulate cooling system is applied to its inner seal housing, which makes SPS pump simple in structure and easy to maintain. SPS split-casing pumps are used far and wide in civil water supply, industry, construction, air-conditioning, irrigation, marine, fire-fighting and power station.

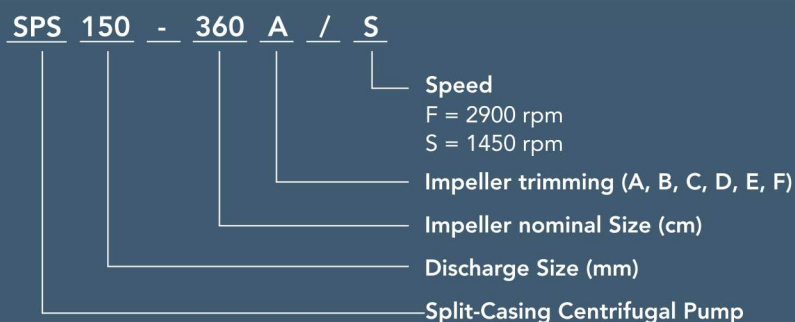
MATERIAL

Casing	- Cast Iron, Ductile Iron, Stainless Steel
Impeller	- Bronze, Cast Iron, Stainless Steel
Shaft	- Stainless Steel 420, Stainless Steel 304, Stainless Steel 316
Shaft Seal	- Mechanical Seal / Gland Packing

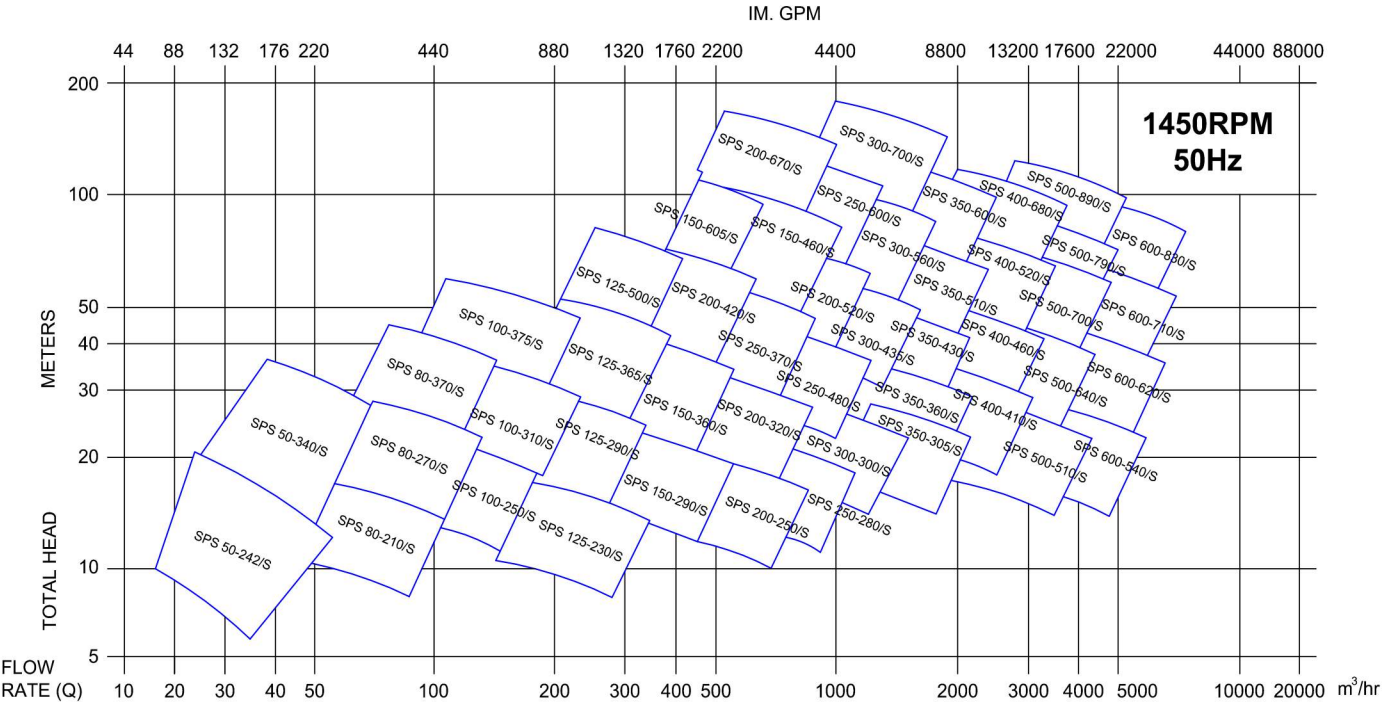
OPERATING CONDITIONS

Discharge diameter	- 80 ~ 600 mm
Max. Flow Rate (Q)	- 2000 l/s
Max. Head (H)	- 170 m
Max. Temperature	- 105 °C
Max. Pressure	- 16 Bar / 25 Bar

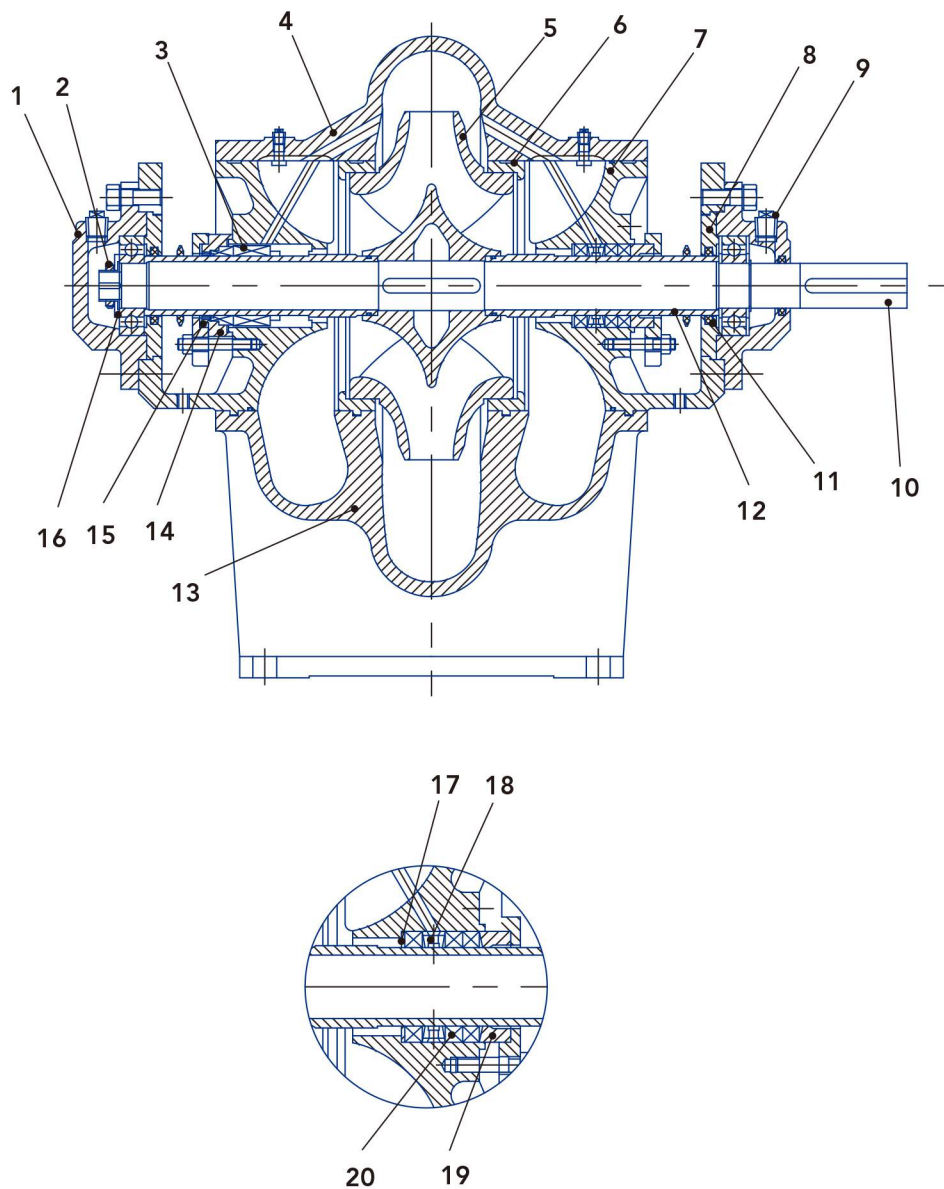
DEFINITION OF MODEL



SELECTION CHARTS

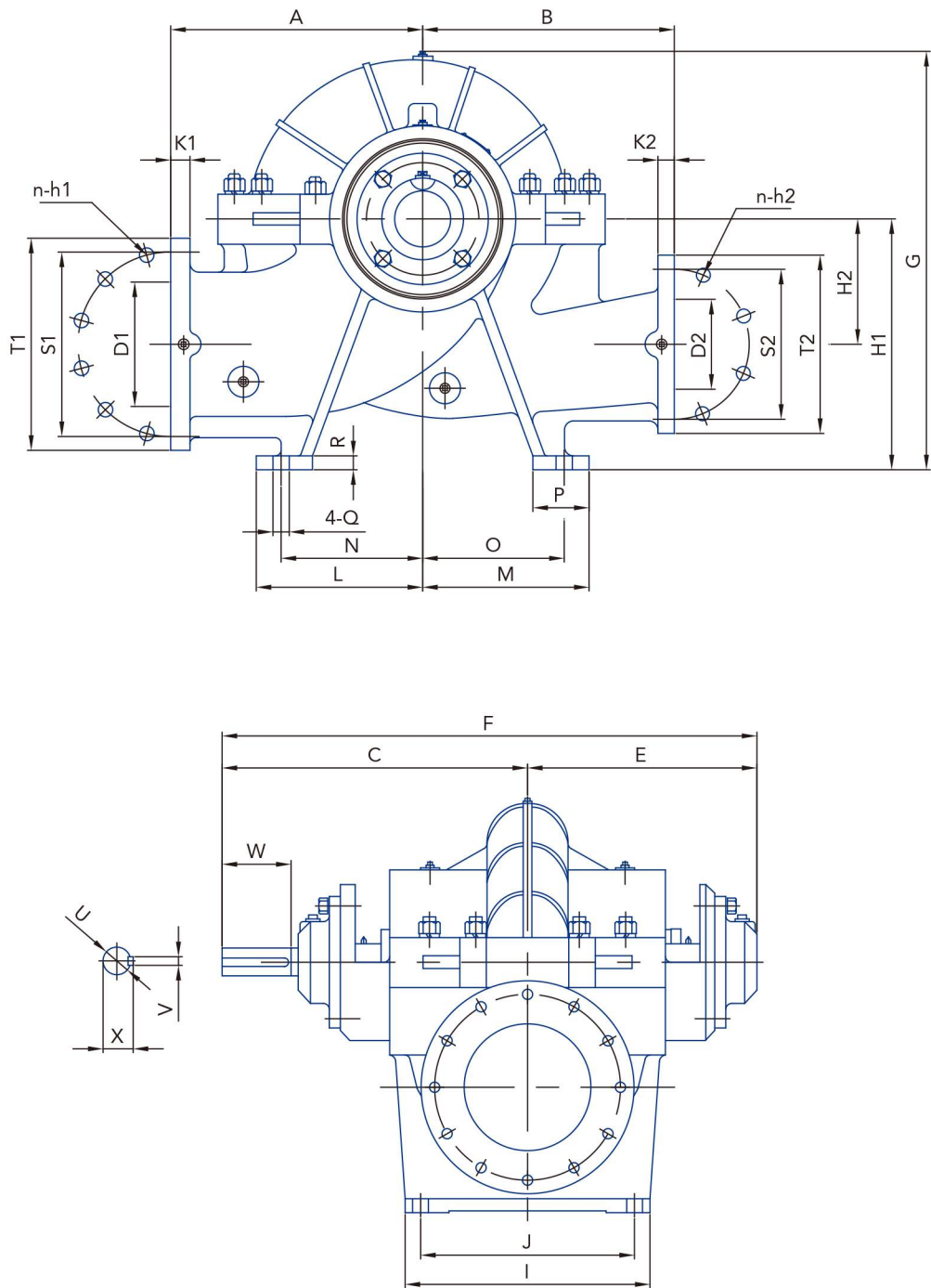


STRUCTURE DRAWING



Parts Number	Parts Name	Parts Number	Parts Name
1	Non-drive End Bearing Housing	11	Bearing Pressing Ring
2	Lock Nut	12	Shaft Sleeve
3	Mechanical Seal	13	Casing
4	Casing Cover	14	Seal Cover
5	Impeller	15	Seal Plate
6	Wear Ring	16	Bearing Baffle
7	Seal Housing	17	Packing Pressing Ring
8	Bearing Cover	18	Seal Cage
9	Drive End Bearing Housing	19	Gland cover
10	Shaft	20	Gland Packing

DIMENSIONAL SKETCHES



Flange Standard Dimensions (ISO7005.2 DIN2501 PN16)

D1 / D2	50	65	80	100	125	150	200	250	300	350	400	500	600	700
T1 / T2	165	185	200	220	250	285	340	405	460	520	580	715	840	910
S1 / S2	125	145	160	180	210	240	295	355	410	470	525	650	770	840
K1 / K2	19	19	22	24	26	26	30	32	34	38	40	46	54	54
n-h1 / n-h2	4-Φ18	4-Φ18	8-Φ17.5	8-Φ17.5	8-Φ17.5	8-Φ22	12-Φ22	12-Φ26	12-Φ26	16-Φ26	16-Φ30	20-Φ33	20-Φ36	24-Φ36

DIMENSIONAL SKETCHES

No	Model	Flange		Pump Body								Foot								Shaft				
		D1	D2	A	B	C	E	F	G	H1	H2	I	J	L	M	N	O	P	Q	R	U	V	W	X
1	SPS 50-242/S	65	50	216	216	305	237	542	343	178	89	222	178	152.5	152.5	130	130	60	Φ19	16	Φ28	8	65	31.3
2	SPS 50-340/S	65	50	254	254	305	237	542	428	216	127	222	178	152.5	152.5	130	130	60	Φ19	16	Φ28	8	65	31.3
3	SPS 80-210/S	125	80	300	300	385	300	685	480	315	140	320	270	205	205	170	170	80	Φ25	22	Φ34	10	80	37.3
4	SPS 80-270/S	125	80	300	300	385	300	685	505	315	140	320	270	205	205	170	170	80	Φ25	22	Φ34	10	80	37.3
5	SPS 80-370/S	125	80	330	330	385	300	685	540	315	140	320	270	205	205	170	170	80	Φ25	22	Φ34	10	80	37.3
6	SPS 100-250/S	150	100	330	330	385	300	685	545	355	170	320	270	235	235	200	200	80	Φ25	22	Φ34	10	80	37.3
7	SPS 100-310/S	150	100	330	330	385	300	685	585	355	170	320	270	235	235	200	200	80	Φ25	22	Φ34	10	80	37.3
8	SPS 100-375/S	150	100	370	370	385	300	685	610	355	170	320	270	235	235	200	200	75	Φ25	22	Φ34	10	80	37.3
9	SPS 125-230/S	200	125	370	370	485	365	850	620	400	200	390	340	265	265	225	225	90	Φ25	22	Φ44	12	110	47.3
10	SPS 125-290/S	200	125	370	370	485	365	850	635	400	200	390	340	265	265	225	225	90	Φ25	22	Φ44	12	110	47.3
11	SPS 125-365/S	200	125	370	370	485	365	850	660	400	200	390	340	265	265	225	225	90	Φ25	22	Φ44	12	110	47.3
12	SPS 125-500/S	200	125	450	450	485	365	850	715	400	200	390	340	320	320	280	280	85	Φ25	22	Φ44	12	110	47.3
13	SPS 150-290/S	200	150	400	400	485	365	850	655	400	200	390	340	265	265	225	225	90	Φ25	22	Φ44	12	110	47.3
14	SPS 150-360/S	200	150	400	400	485	365	850	670	400	200	390	340	265	265	225	225	90	Φ25	22	Φ44	12	110	47.3
15	SPS 150-460/S	200	150	450	450	520	400	920	710	400	200	480	430	315	315	280	280	75	Φ30	35	Φ54	16	110	58.3
16	SPS 150-605/S	200	150	600	500	520	400	920	885	500	300	480	430	390	390	350	350	95	Φ30	35	Φ54	16	110	58.3
17	SPS 200-250/S	250	200	450	450	520	400	920	780	500	240	480	430	315	315	280	280	85	Φ25	25	Φ54	16	110	58.3
18	SPS 200-320/S	250	200	450	450	520	400	920	800	500	240	480	430	315	315	280	280	85	Φ25	25	Φ54	16	110	58.3
19	SPS 200-420/S	250	200	500	500	520	400	920	820	500	240	480	430	330	330	280	280	100	Φ25	25	Φ54	16	110	58.3
20	SPS 200-520/S	250	200	600	600	614	464	1078	920	560	300	490	430	400	400	350	350	100	Φ28	28	Φ64	18	140	68.4
21	SPS 200-670/S	250	200	650	550	614	464	1078	920	600	350	500	400	400	400	350	350	110	Φ30	35	Φ64	18	140	68.4
22	SPS 250-280/S	300	250	500	500	614	464	1078	940	600	300	480	400	400	400	350	350	100	Φ30	28	Φ64	18	140	68.4
23	SPS 250-370/S	300	250	500	500	614	464	1078	945	600	300	480	400	400	400	350	350	100	Φ30	28	Φ64	18	140	68.4
24	SPS 250-480/S	300	250	550	550	695	515	1210	950	600	300	600	520	400	400	350	350	100	Φ30	32	Φ74	20	170	78.9
25	SPS 250-600/S	300	250	650	550	695	515	1210	1050	630	350	600	520	400	400	350	350	110	Φ30	35	Φ74	20	170	78.9
26	SPS 300-300/S	350	300	550	500	614	464	1078	1000	630	300	500	400	400	400	350	350	100	Φ30	30	Φ64	18	140	68.4
27	SPS 300-435/S	350	300	650	550	695	515	1210	1050	670	350	600	520	400	400	350	350	100	Φ30	32	Φ74	20	170	78.9
28	SPS 300-560/S	400	300	700	650	765	585	1350	1135	710	350	620	520	525	525	475	475	110	Φ30	35	Φ84	22	170	89.4
29	SPS 300-700/S	400	300	750	650	765	585	1350	1235	750	400	620	520	530	530	475	475	120	Φ30	40	Φ84	22	170	89.4
30	SPS 350-305/S	400	350	650	550	695	515	1210	1060	670	350	600	520	400	400	350	350	100	Φ30	32	Φ74	20	170	78.9
31	SPS 350/360/S	400	350	650	550	695	515	1210	1090	670	350	600	520	400	400	350	350	100	Φ30	32	Φ74	20	170	78.9
32	SPS 350-460/S	450	350	750	650	765	585	1350	1165	750	400	600	520	530	530	475	475	120	Φ30	35	Φ84	22	170	89.4
33	SPS 350-510/S	400	350	700	650	765	585	1350	1185	750	400	620	520	525	525	475	475	110	Φ30	40	Φ84	22	170	89.4
34	SPS 350-660/S	450	350	750	650	765	585	1350	1255	780	400	620	520	530	530	475	475	120	Φ30	40	Φ84	22	170	89.4
35	SPS 400-410/S	500	400	700	550	840	655	1495	1205	800	400	750	650	420	420	370	370	120	Φ33	40	Φ75	20	170	79.9
36	SPS 400-460/S	500	400	650	550	840	655	1495	1225	800	400	750	650	520	520	470	470	120	Φ33	40	Φ75	20	170	79.9
37	SPS 400-520/S	500	400	750	650	765	585	1350	1380	900	450	700	600	550	550	500	500	120	Φ33	45	Φ84	22	170	89.4
38	SPS 400-680/S	500	400	750	650	895	670	1565	1390	850	450	720	650	500	500	440	440	150	Φ33	40	Φ95	25	210	100.4
39	SPS 500-510/S	600	500	850	750	940	755	1695	1490	950	475	900	600	560	560	500	500	150	Φ42	60	Φ85	22	170	90.4
40	SPS 500-640/S	600	500	850	750	940	755	1695	1490	950	470	900	600	560	560	500	500	150	Φ42	60	Φ85	22	170	90.4
41	SPS 500-700/S	600	500	1000	850	935	710	1645	1630	1050	550	790	660	720	720	660	660	150	Φ42	60	Φ105	28	210	111.4
42	SPS 500-790/S	600	500	1000	900	1078	810	1888	1760	1100	600	1000	900	710	710	650	650	150	Φ42	60	Φ115	32	220	122.4
43	SPS 500-890/S	600	500	1050	950	1078	810	1888	1855	1150	650	1000	900	710	710	650	650	150	Φ42	60	Φ115	32	220	122.4
44	SPS 600-540/S	700	600	1100	900	940	755	1695	1695	1100	560	910	790	705	705	650	650	150	Φ42	60	Φ85	22	170	90.4
45	SPS 600-620/S	700	600	1000	1000	1025	800	1825	1725	1100	545	950	850	725	725	665	665	150	Φ42	60	Φ105	28	210	111.4
46	SPS 600-710/S	700	600	1000	1100	1078	810	1888	1710	1050	545	1020	900	710	710	650	650	150	Φ42	50	Φ115	32	220	122.4
47	SPS 600-830/S	700	600	1100	1200	1130	855	1985	1850	1150	650	970	820	710	710	650	650	150	Φ42	60	Φ125	32	250	132.4



SPV SERIES



SPLV SERIES



SUBMERSIBLE PUMP SERIES



SPE, SPI, SPS SERIES



SUPERPOWER PUMPING ENGINEERING CO., LTD

G/F., Times Tower, 928-930 Cheung Sha Wan Road, Kowloon, Hong Kong

Sales Hotline: (852) 2746 4933

Fax: (852) 2786 2307

Website: www.sppump.com

Email: info@sppump.com



ISO 9001



ISO 14001



OHSAS 18001



WASTEWISE



CARING COMPANY

While the production techniques continue to improve, designs and materials used for the products may thus be varied from time to time. No further notice will be provided.

Rev. 09/2017